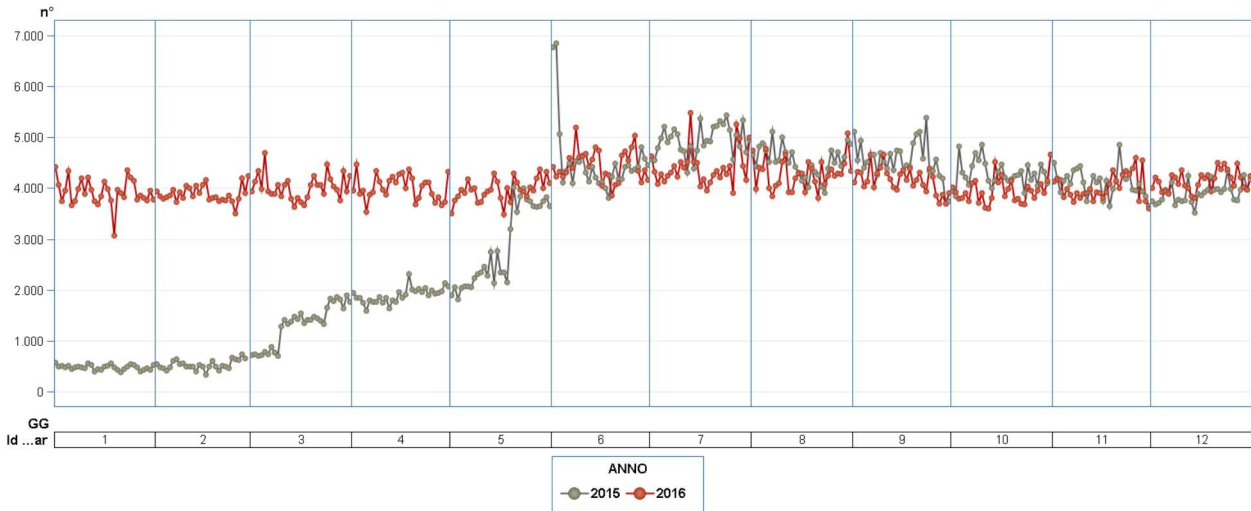


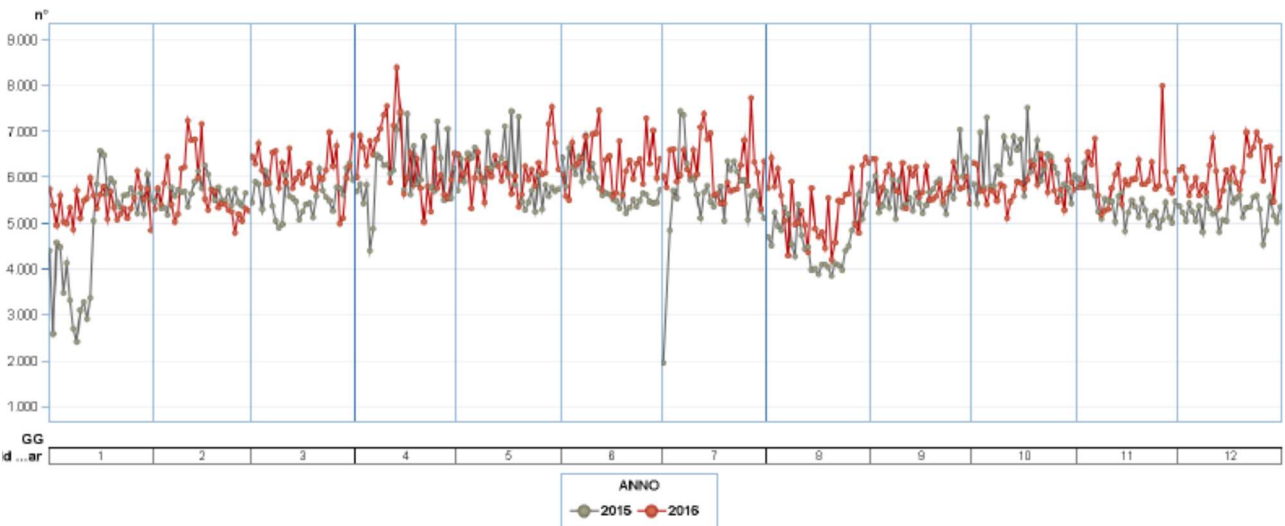
**TOTALE CHIAMATE ENTRANTI – ANNO 2016**

**CUR NUE 112 BRESCIA**



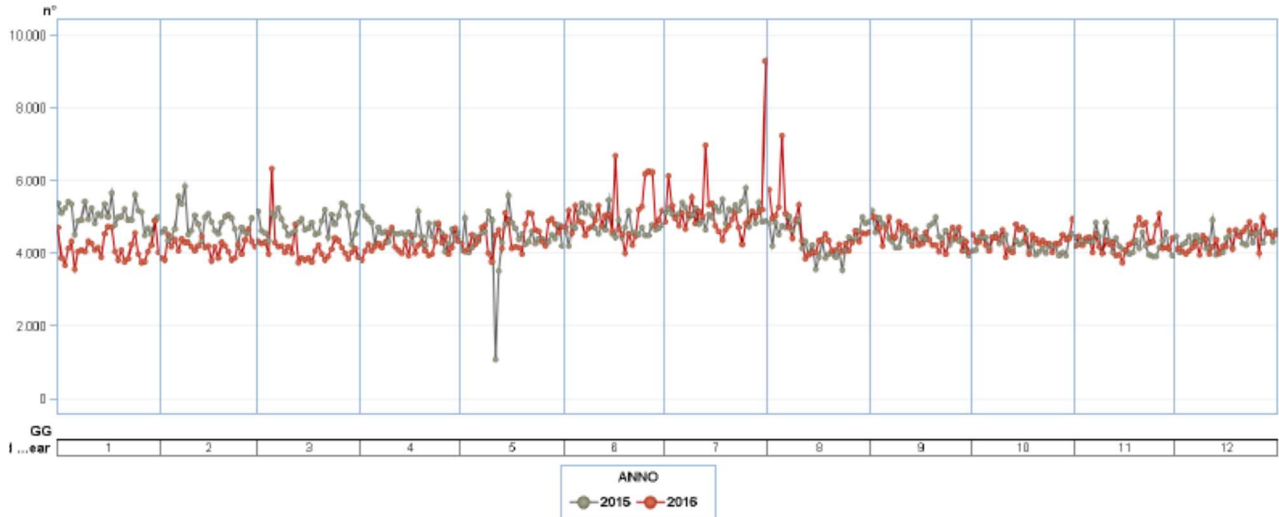
ANNO as-mese	2016-01		2016-02		2016-03		2016-04		2016-05		2016-06		2016-07		2016-08		2016-09		2016-10		2016-11		2016-12		Total			
	n°	%	n°	%	n°	%	n°	%	n°	%	n°	%	n°	%	n°	%	n°	%	n°	%	n°	%	n°	%	n°	%		
Tipo Coda																												
NUE_112	81.369	66,73%	73.335	64,97%	79.891	64,01%	80.615	66,86%	81.600	66,32%	91.815	68,70%	91.873	67,20%	90.119	67,77%	85.375	68,35%	83.345	68,01%	83.601	69,14%	85.905	66,77%	1.008.843	67,09%		
NUE_113	13.172	10,80%	12.668	11,22%	16.611	13,31%	14.365	11,91%	14.183	11,53%	14.884	11,14%	14.892	10,80%	14.857	11,17%	14.135	11,32%	13.585	11,08%	13.116	10,85%	13.458	10,46%	169.916	11,30%		
NUE_115	4.764	3,91%	4.259	3,77%	5.236	4,20%	4.617	3,83%	5.538	4,50%	5.981	4,48%	7.102	5,19%	6.622	4,98%	5.387	4,31%	4.708	3,84%	4.182	3,46%	4.775	3,71%	63.171	4,20%		
NUE_118	22.625	18,56%	22.613	20,03%	23.072	18,40%	20.971	17,39%	21.727	17,66%	20.963	15,69%	22.843	16,71%	21.383	16,08%	20.010	16,02%	20.919	17,07%	20.021	16,56%	24.527	19,06%	261.674	17,40%		
Total	121.930	100,00%	112.875	100,00%	124.810	100,00%	120.568	100,00%	123.048	100,00%	133.643	100,00%	136.710	100,00%	132.981	100,00%	124.907	100,00%	122.557	100,00%	120.920	100,00%	128.665	100,00%	1.503.614	100,00%		

**CUR NUE 112 MILANO**



ANNO as-mese	2016-01		2016-02		2016-03		2016-04		2016-05		2016-06		2016-07		2016-08		2016-09		2016-10		2016-11		2016-12		Total			
	n°	%	n°	%	n°	%	n°	%	n°	%	n°	%	n°	%	n°	%	n°	%	n°	%	n°	%	n°	%	n°	%		
Tipo Coda																												
NUE_112	99.501	59,32%	99.029	59,88%	107.758	56,75%	98.014	51,34%	97.852	51,42%	94.729	50,01%	101.039	52,49%	87.716	52,94%	90.117	51,19%	86.412	47,75%	86.469	48,31%	90.238	47,38%	1.138.874	52,28%		
NUE_113	20.715	12,35%	20.428	12,35%	25.991	13,69%	24.340	12,75%	23.053	12,11%	24.057	12,70%	26.442	13,74%	20.290	12,25%	22.671	12,88%	23.641	13,06%	24.259	13,55%	23.603	12,39%	279.490	12,83%		
NUE_115	7.365	4,39%	6.357	3,84%	7.924	4,17%	7.558	3,96%	8.537	4,49%	8.880	4,69%	14.365	7,46%	16.268	9,82%	17.030	9,67%	16.520	9,13%	15.405	8,61%	15.798	8,29%	142.007	6,52%		
NUE_118	40.148	23,94%	39.573	23,93%	48.218	25,39%	60.998	31,95%	60.848	31,98%	61.768	32,61%	50.632	26,31%	41.424	25,00%	46.226	26,26%	54.381	30,05%	52.868	29,54%	60.826	31,94%	617.910	28,37%		
Total	167.729	100,00%	165.387	100,00%	189.891	100,00%	190.910	100,00%	190.290	100,00%	189.634	100,00%	192.478	100,00%	165.698	100,00%	176.044	100,00%	180.954	100,00%	179.001	100,00%	190.465	100,00%	2.178.281	100,00%		

**CUR NUE 112 VARESE**



ANNO	2016-01		2016-02		2016-03		2016-04		2016-05		2016-06		2016-07		2016-08		2016-09		2016-10		2016-11		2016-12		Total			
	n°	%	n°	%	n°	%	n°	%	n°	%	n°	%	n°	%	n°	%	n°	%	n°	%	n°	%	n°	%	n°	%		
Tipo																												
Coda																												
NUE_112	89.316	69,65%	82.923	68,58%	89.430	69,38%	90.090	70,93%	99.312	71,27%	101.671	67,71%	111.382	69,28%	102.974	72,43%	95.071	70,92%	96.212	71,07%	92.907	71,27%	93.121	68,97%	1.144.409	70,11%		
NUE_113	11.338	8,84%	12.505	10,34%	12.744	9,80%	11.167	8,79%	11.973	8,59%	17.760	11,83%	17.348	10,79%	11.426	8,04%	11.854	8,84%	12.048	8,90%	11.525	8,84%	11.504	8,52%	153.192	9,38%		
NUE_115	4.643	3,62%	4.003	3,31%	4.900	3,80%	4.268	3,38%	5.220	3,75%	7.426	4,95%	7.707	4,79%	6.431	4,52%	5.531	4,13%	4.655	3,44%	4.078	3,13%	4.705	3,48%	63.597	3,90%		
NUE_118	22.946	17,89%	21.492	17,77%	21.821	16,93%	21.456	16,88%	22.833	16,39%	23.307	15,52%	24.337	15,14%	21.349	15,02%	21.607	16,12%	20.459	16,59%	21.852	16,76%	25.696	19,03%	271.155	16,61%		
Total	128.243	100,00%	120.923	100,00%	128.895	100,00%	127.011	100,00%	139.338	100,00%	150.164	100,00%	160.774	100,00%	142.180	100,00%	134.063	100,00%	135.374	100,00%	130.362	100,00%	135.026	100,00%	1.632.353	100,00%		

## ESITO CHIAMATE ENTRANTI – ANNO 2016

### CUR NUE 112 BRESCIA

Tipo Coda	aa-mese	2016-01		2016-02		2016-03		2016-04		2016-05		2016-06		2016-07		2016-08		2016-09		2016-10		2016-11		2016-12		Total					
		n°	%	n°	%	n°	%	n°	%	n°	%	n°	%	n°	%	n°	%	n°	%	n°	%	n°	%	n°	%	n°	%				
NUE_112	CALL_TP																														
	RISPOSTA ABBANDONATA DOPO 4 SQUILLI	68.866	84,63%	62.529	85,26%	68.827	86,15%	69.821	86,61%	69.757	85,40%	79.270	86,34%	78.696	85,66%	77.435	85,93%	73.404	85,98%	71.398	85,67%	71.830	85,92%	72.754	84,69%	864.587	85,70%	1.098	0,11%		
	ABBANDONATA ENTRO 4 SQUILLI	83	0,10%	25	0,03%	34	0,04%	43	0,05%	60	0,07%	203	0,22%	279	0,30%	130	0,14%	49	0,06%	70	0,08%	64	0,08%	58	0,07%	1.098	0,11%	1.098	0,11%		
NUE_113	CALL_TP																														
	RISPOSTA ABBANDONATA DOPO 4 SQUILLI	12.420	15,26%	10.781	14,70%	11.030	13,81%	10.751	13,34%	11.783	14,44%	12.342	13,44%	12.898	14,04%	12.554	13,93%	11.922	13,96%	11.877	14,25%	11.707	14,00%	13.093	15,24%	143.158	14,19%	143.158	14,19%		
	ABBANDONATA ENTRO 4 SQUILLI	12.175	92,43%	11.666	92,09%	15.552	93,62%	13.286	92,49%	12.918	91,08%	13.456	90,41%	13.394	89,94%	13.384	90,09%	12.831	90,77%	12.333	90,78%	11.941	91,04%	12.304	91,43%	155.240	91,36%	155.240	91,36%		
NUE_115	CALL_TP																														
	RISPOSTA ABBANDONATA DOPO 4 SQUILLI	15	0,11%	4	0,03%	4	0,02%	5	0,03%	19	0,13%	45	0,30%	79	0,53%	31	0,21%	4	0,03%	11	0,08%	9	0,07%	9	0,07%	9	0,07%	235	0,14%	235	0,14%
	ABBANDONATA ENTRO 4 SQUILLI	982	7,46%	998	7,88%	1.055	6,35%	1.074	7,48%	1.246	8,79%	1.383	9,29%	1.419	9,53%	1.442	9,71%	1.300	9,20%	1.241	9,14%	1.166	8,89%	1.145	8,51%	14.451	8,50%	14.451	8,50%		
NUE_118	CALL_TP																														
	RISPOSTA ABBANDONATA DOPO 4 SQUILLI	4.313	90,53%	3.854	90,49%	4.821	92,07%	4.229	91,60%	5.057	91,31%	5.470	91,46%	6.483	91,28%	6.070	91,66%	4.971	92,28%	4.267	90,63%	3.785	90,51%	4.362	91,35%	57.682	91,31%	57.682	91,31%		
	ABBANDONATA ENTRO 4 SQUILLI	4	0,08%			2	0,04%	2	0,04%	9	0,16%	32	0,54%	55	0,77%	19	0,29%	2	0,04%	4	0,08%	3	0,07%	4	0,08%	3	0,07%	136	0,22%	136	0,22%
<b>Total</b>		121.930	100,00%	112.875	100,00%	124.810	100,00%	120.568	100,00%	123.048	100,00%	133.643	100,00%	136.710	100,00%	132.981	100,00%	124.907	100,00%	122.557	100,00%	120.920	100,00%	128.665	100,00%	1.503.614	100,00%	1.503.614	100,00%		

### CUR NUE 112 MILANO

Tipo Coda	aa-mese	2016-01		2016-02		2016-03		2016-04		2016-05		2016-06		2016-07		2016-08		2016-09		2016-10		2016-11		2016-12		Total			
		n°	%	n°	%	n°	%	n°	%	n°	%	n°	%	n°	%	n°	%	n°	%	n°	%	n°	%	n°	%	n°	%		
NUE_112	CALL_TP																												
	RISPOSTA ABBANDONATA DOPO 4 SQUILLI	84.360	84,78%	83.350	84,17%	91.847	85,23%	83.179	84,86%	82.561	84,37%	78.857	83,24%	83.543	82,68%	76.215	86,89%	74.945	83,16%	72.835	84,29%	72.623	83,99%	75.473	83,64%	959.788	84,28%	959.788	84,28%
	ABBANDONATA ENTRO 4 SQUILLI	523	0,53%	204	0,21%	226	0,21%	329	0,34%	430	0,44%	746	0,79%	2.298	2,27%	280	0,32%	629	0,70%	242	0,28%	317	0,37%	571	0,63%	6.795	6,06%	6.795	6,06%
NUE_113	CALL_TP																												
	RISPOSTA ABBANDONATA DOPO 4 SQUILLI	14.618	14,69%	15.475	15,63%	15.685	14,56%	14.506	14,80%	14.861	15,19%	15.126	15,97%	15.198	15,04%	11.221	12,79%	14.543	16,14%	13.335	15,43%	13.529	15,65%	14.194	15,73%	172.291	15,13%	172.291	15,13%
	ABBANDONATA ENTRO 4 SQUILLI	18.910	91,29%	18.840	92,23%	24.266	93,36%	22.493	92,41%	21.158	91,78%	21.917	91,10%	23.361	89,10%	18.922	93,26%	20.682	91,23%	21.839	92,38%	22.146	91,29%	21.485	91,03%	256.219	91,67%	256.219	91,67%
NUE_115	CALL_TP																												
	RISPOSTA ABBANDONATA DOPO 4 SQUILLI	240	1,16%	53	0,26%	52	0,20%	106	0,44%	145	0,63%	218	0,91%	782	2,96%	64	0,32%	235	1,04%	93	0,39%	83	0,34%	175	0,74%	2.246	0,90%	2.246	0,90%
	ABBANDONATA ENTRO 4 SQUILLI	1.565	7,55%	1.535	7,51%	1.673	6,44%	1.741	7,15%	1.750	7,59%	1.922	7,99%	2.099	7,94%	1.304	6,43%	1.754	7,74%	1.709	7,23%	2.030	8,37%	1.943	8,23%	21.025	7,52%	21.025	7,52%
NUE_118	CALL_TP																												
	RISPOSTA ABBANDONATA DOPO 4 SQUILLI	6.591	89,49%	5.703	89,71%	7.090	89,48%	6.791	89,85%	7.641	89,50%	7.927	89,27%	12.604	87,74%	15.247	93,72%	15.434	90,63%	15.394	93,18%	14.168	91,97%	14.223	90,03%	128.813	90,71%	128.813	90,71%
	ABBANDONATA ENTRO 4 SQUILLI	79	1,07%	12	0,19%	43	0,54%	23	0,30%	57	0,67%	128	1,44%	432	3,01%	47	0,29%	72	0,42%	58	0,35%	38	0,25%	51	0,32%	1.040	0,73%	1.040	0,73%
<b>Total</b>		167.729	100,00%	165.387	100,00%	189.891	100,00%	190.910	100,00%	190.290	100,00%	189.434	100,00%	192.478	100,00%	165.698	100,00%	176.644	100,00%	180.854	100,00%	179.001	100,00%	190.465	100,00%	2.178.251	100,00%	2.178.251	100,00%

### CUR NUE 112 VARESE

Tipo Coda	aa-mese	2016-01		2016-02		2016-03		2016-04		2016-05		2016-06		2016-07		2016-08		2016-09		2016-10		2016-11		2016-12		Total			
		n°	%	n°	%	n°	%	n°	%	n°	%	n°	%	n°	%	n°	%	n°	%	n°	%	n°	%	n°	%	n°	%		
NUE_112	CALL_TP																												
	RISPOSTA ABBANDONATA DOPO 4 SQUILLI	72.490	81,16%	67.628	81,56%	72.914	81,53%	73.540	81,63%	81.220	81,78%	81.548	80,21%	88.900	79,82%	85.020	82,56%	78.049	82,10%	79.345	82,47%	76.171	81,99%	77.373	83,09%	934.198	81,63%	934.198	81,63%
	ABBANDONATA ENTRO 4 SQUILLI	16.754	18,76%	15.251	18,39%	16.344	18,28%	16.485	18,30%	17.995	18,12%	18.916	18,61%	20.433	18,34%	17.248	16,75%	16.893	17,77%	16.790	17,45%	16.645	17,92%	15.606	16,76%	205.360	17,94%	205.360	17,94%
NUE_113	CALL_TP																												
	RISPOSTA ABBANDONATA DOPO 4 SQUILLI	18	0,16%	8	0,06%	27	0,21%	21	0,19%	14	0,12%	225	1,27%	228	1,31%	106	0,93%	22	0,19%	13	0,11%	20	0,17%	21	0,18%	723	0,47%	723	0,47%
	ABBANDONATA ENTRO 4 SQUILLI	1.270	11,20%	1.220	9,76%	1.320	10,36%	1.314	11,77%	1.429	11,94%	2.376	13,38%	2.772	15,98%	1.565	13,70%	1.529	12,90%	1.463	12,14%	1.555	13,49%	1.352	11,75%	19.165	12,51%	19.165	12,51%
NUE_115	CALL_TP																												
	RISPOSTA ABBANDONATA DOPO 4 SQUILLI	3	0,06%	4	0,10%	7	0,16%	7	0,16%	9	0,17%	502	6,76%	312	4,05%	171	2,66%	14	0,25%	7	0,15%	7	0,17%	12	0,26%	1.066	1,68%	1.066	1,68%
	ABBANDONATA ENTRO 4 SQUILLI	595	12,81%	587	14,66%	696	14,20%	671	15,61%	707	13,54%	926	12,47%	898	11,65%	711	11,06%	663	11,99%	672	14,44%	615	15,08%	603	12,82%	8.344	13,12%	8.344	13,12%
NUE_118	CALL_TP																												
	RISPOSTA ABBANDONATA DOPO 4 SQUILLI	21.331	92,96%	20.186	93,92%	20.304	93,05%	19.913	92,81%	21.107	92,44%	21.126	90,64%	22.178	91,13%	19.671	92,14%	19.969	92,42%	20.903	93,07%	20.298	92,89%	24.108	93,82%	251.094	92,60%	251.094	92,60%
	ABBANDONATA ENTRO 4 SQUILLI	7	0,03%	5	0,02%	17	0,08%	12	0,06%	13	0,06%	253	1,09%	198	0,81%	81	0,38%	19	0,09%	15	0,07%	27	0,12%	34	0,13%	681	0,25%	681	0,25%
<b>Total</b>		128.243	100,00%	120.923	100,00%	128.895	100,00%	127.011	100,00%	139.338	100,00%	150.164	100,00%	160.774	100,00%	142.180	100,00%	134.065	100,00%	135.574	100,00%	130.362	100,00%	135.026	100,00%	1.632.553	100,00%	1.632.553	100,00%

## EFFETTO FILTRO SU CHIAMATE RISPOSTE – ANNO 2016

Il NUE filtra le chiamate e inoltre alle amministrazioni competenti solo quelle effettivamente di emergenza: in questo modo Carabinieri, Polizia, Vigili del Fuoco e Soccorso sanitario non sono impegnati con chiamate inappropriate e risparmiano tempo.

### CUR NUE 112 BRESCIA

aa-mese		2016-01		2016-02		2016-03		2016-04		2016-05		2016-06		2016-07		2016-08		2016-09		2016-10		2016-11		2016-12		Total			
		n°	%	n°	%	n°	%	n°	%	n°	%	n°	%	n°	%	n°	%	n°	%	n°	%	n°	%	n°	%	n°	%		
Tipo	Inoltro																												
Coda	Plap2																												
	NO	46.729	67,85%	40.767	65,20%	45.816	66,57%	47.451	67,06%	45.732	65,56%	52.885	66,72%	49.241	62,57%	51.443	66,43%	48.457	66,01%	46.515	65,15%	48.019	66,85%	46.720	64,22%	569.775	65,00%		
NUE_112	SI	22.137	32,15%	21.762	34,80%	23.011	33,43%	22.370	32,04%	24.025	34,44%	26.385	33,28%	29.455	37,43%	25.992	33,57%	24.947	33,09%	24.883	34,85%	23.811	33,15%	26.034	33,78%	294.812	34,10%		
	Subtotal	68.866	100,00%	62.529	100,00%	68.827	100,00%	69.821	100,00%	69.757	100,00%	79.270	100,00%	78.696	100,00%	77.435	100,00%	73.404	100,00%	71.398	100,00%	71.330	100,00%	72.754	100,00%	864.587	100,00%		
	NO	6.679	54,86%	6.272	53,76%	9.943	63,93%	7.672	57,74%	7.234	56,00%	6.843	50,85%	6.009	44,86%	7.195	53,76%	6.425	50,07%	6.063	49,16%	6.180	51,75%	6.240	50,72%	82.755	53,31%		
NUE_113	SI	5.496	45,14%	5.394	46,24%	5.609	36,07%	5.614	42,26%	5.684	44,00%	6.613	49,15%	7.385	55,14%	6.189	46,24%	6.406	49,93%	6.270	50,84%	5.761	48,25%	6.064	49,28%	72.485	46,69%		
	Subtotal	12.175	100,00%	11.666	100,00%	15.552	100,00%	13.286	100,00%	12.918	100,00%	13.456	100,00%	13.394	100,00%	13.384	100,00%	12.831	100,00%	12.333	100,00%	11.941	100,00%	12.304	100,00%	155.240	100,00%		
	NO	2.598	60,24%	2.426	62,95%	3.079	63,87%	2.577	60,94%	2.654	52,48%	2.769	50,62%	3.291	50,76%	3.108	51,20%	2.605	52,40%	2.384	55,87%	2.393	63,22%	2.539	58,21%	32.423	56,21%		
NUE_115	SI	1.715	39,76%	1.428	37,05%	1.742	36,13%	1.652	39,06%	2.403	47,52%	2.701	49,38%	3.192	49,24%	2.962	48,80%	2.366	47,60%	1.883	44,13%	1.392	36,78%	1.823	41,79%	25.259	43,79%		
	Subtotal	4.313	100,00%	3.854	100,00%	4.821	100,00%	4.259	100,00%	5.057	100,00%	5.470	100,00%	6.483	100,00%	6.070	100,00%	4.971	100,00%	4.267	100,00%	3.785	100,00%	4.362	100,00%	57.682	100,00%		
	NO	6.693	31,02%	7.143	33,07%	6.846	30,96%	5.727	28,62%	5.846	28,22%	5.050	25,46%	5.303	24,47%	5.142	25,19%	3.833	20,17%	3.899	19,49%	3.973	20,78%	4.796	20,43%	64.251	25,75%		
NUE_118	SI	14.882	68,98%	14.457	66,93%	15.265	69,04%	14.286	71,38%	14.872	71,78%	14.787	74,54%	16.367	75,53%	15.274	74,81%	15.168	79,83%	16.103	80,51%	15.144	79,22%	18.679	79,57%	188.284	74,25%		
	Subtotal	21.575	100,00%	21.600	100,00%	22.111	100,00%	20.013	100,00%	20.718	100,00%	19.837	100,00%	21.670	100,00%	20.416	100,00%	19.001	100,00%	20.002	100,00%	19.117	100,00%	23.475	100,00%	249.535	100,00%		
Total	Subtotal	106.929	100,00%	99.649	100,00%	111.511	100,00%	107.349	100,00%	108.450	100,00%	118.033	100,00%	120.243	100,00%	117.305	100,00%	110.207	100,00%	108.000	100,00%	106.673	100,00%	112.895	100,00%	1.327.044	100,00%		

### CUR NUE 112 MILANO

aa-mese		2016-01		2016-02		2016-03		2016-04		2016-05		2016-06		2016-07		2016-08		2016-09		2016-10		2016-11		2016-12		Total			
		n°	%	n°	%	n°	%	n°	%	n°	%	n°	%	n°	%	n°	%	n°	%	n°	%	n°	%	n°	%	n°	%		
Tipo	Inoltro																												
Coda	Plap2																												
	NO	61.931	73,41%	62.268	74,71%	72.733	79,19%	60.173	72,34%	55.965	67,79%	51.044	64,73%	52.709	63,09%	51.606	67,71%	48.288	64,43%	46.000	63,16%	45.552	62,72%	47.296	62,67%	655.565	68,30%		
NUE_112	SI	22.429	26,59%	21.082	25,29%	19.114	20,81%	23.006	27,66%	26.596	32,21%	27.813	35,27%	30.834	36,91%	24.609	32,29%	26.657	35,57%	26.835	36,84%	27.071	37,28%	28.177	37,33%	304.223	31,70%		
	Subtotal	84.360	100,00%	83.350	100,00%	91.847	100,00%	83.179	100,00%	82.561	100,00%	78.857	100,00%	83.543	100,00%	76.215	100,00%	74.945	100,00%	72.835	100,00%	72.622	100,00%	75.473	100,00%	959.788	100,00%		
	NO	6.997	37,00%	7.694	40,84%	13.546	55,82%	9.909	44,05%	7.374	34,85%	7.594	34,65%	7.731	32,81%	6.545	34,59%	7.316	33,37%	7.910	36,22%	8.742	39,47%	7.533	33,06%	98.891	38,60%		
NUE_113	SI	11.913	63,00%	11.146	59,16%	10.720	44,18%	12.584	55,95%	13.784	65,15%	14.323	65,35%	15.830	67,19%	12.377	65,41%	13.366	64,63%	13.929	63,78%	13.404	60,33%	13.952	64,94%	157.328	61,40%		
	Subtotal	18.910	100,00%	18.840	100,00%	24.266	100,00%	22.493	100,00%	21.158	100,00%	21.917	100,00%	23.561	100,00%	18.922	100,00%	20.682	100,00%	21.859	100,00%	22.146	100,00%	21.485	100,00%	256.219	100,00%		
	NO	3.822	57,99%	3.882	68,07%	5.382	75,91%	4.557	67,10%	4.215	55,16%	4.314	54,42%	8.096	64,23%	12.059	79,09%	12.019	77,87%	12.441	80,82%	11.819	83,42%	11.668	82,04%	94.274	73,19%		
NUE_115	SI	2.769	42,01%	1.821	31,93%	1.708	24,09%	2.234	32,90%	3.426	44,84%	3.613	45,58%	4.508	35,77%	3.188	20,91%	3.415	22,13%	2.953	19,18%	2.349	16,58%	2.555	17,96%	34.539	26,81%		
	Subtotal	6.591	100,00%	5.703	100,00%	7.090	100,00%	6.791	100,00%	7.641	100,00%	7.927	100,00%	12.604	100,00%	15.247	100,00%	15.434	100,00%	15.394	100,00%	14.168	100,00%	14.223	100,00%	128.813	100,00%		
	NO	11.090	29,01%	12.680	33,77%	24.913	53,97%	34.163	57,95%	29.599	50,31%	32.513	54,66%	21.105	43,84%	18.360	45,81%	17.921	40,73%	23.439	44,71%	23.403	45,99%	25.139	43,01%	274.330	46,25%		
NUE_118	SI	37.132	70,99%	25.088	66,43%	21.253	46,03%	24.791	42,05%	29.001	49,49%	26.966	45,34%	27.038	56,16%	21.717	54,19%	26.058	59,23%	28.980	55,29%	27.479	54,01%	33.305	56,99%	318.808	53,75%		
	Subtotal	38.222	100,00%	37.768	100,00%	46.171	100,00%	58.954	100,00%	58.600	100,00%	59.479	100,00%	48.143	100,00%	40.077	100,00%	43.979	100,00%	52.419	100,00%	50.882	100,00%	58.444	100,00%	593.138	100,00%		
Total	Subtotal	148.853	100,00%	145.661	100,00%	169.374	100,00%	171.417	100,00%	169.960	100,00%	168.180	100,00%	167.851	100,00%	150.461	100,00%	155.040	100,00%	162.487	100,00%	159.819	100,00%	169.625	100,00%	1.937.958	100,00%		

### CUR NUE 112 VARESE

aa-mese		2016-01		2016-02		2016-03		2016-04		2016-05		2016-06		2016-07		2016-08		2016-09		2016-10		2016-11		2016-12		Total			
		n°	%	n°	%	n°	%	n°	%	n°	%	n°	%	n°	%	n°	%	n°	%	n°	%	n°	%	n°	%	n°	%		
Tipo	Inoltro																												
Coda	Plap2																												
	NO	40.897	56,42%	38.110	56,35%	40.890	56,08%	41.788	56,82%	46.597	57,37%	44.904	55,06%	46.188	51,96%	48.217	56,71%	43.049	55,16%	44.082	55,56%	42.035	55,19%	40.358	52,16%	517.115	55,35%		
NUE_112	SI	31.593	43,58%	29.518	43,65%	32.024	43,92%	31.752	43,18%	34.623	42,63%	36.644	44,94%	42.712	48,04%	36.803	43,29%	35.000	44,84%	35.263	44,44%	34.136	44,81%	37.015	47,84%	417.083	44,65%		
	Subtotal	72.490	100,00%	67.628	100,00%	72.914	100,00%	73.540	100,00%	81.220	100,00%	81.548	100,00%	88.900	100,00%	85.020	100,00%	78.049	100,00%	79.345	100,00%	76.171	100,00%	77.373	100,00%	934.198	100,00%		
	NO	5.028	50,03%	6.450	57,20%	6.217	54,55%	4.752	48,33%	5.281	50,15%	9.291	61,29%	7.563	52,71%	4.184	42,89%	4.571	44,37%	4.926	46,59%	4.364	43,86%	4.218	41,63%	66.845	50,14%		
NUE_113	SI	5.022	49,97%	4.827	42,80%	5.180	45,45%	5.080	51,67%	5.249	49,85%	5.868	38,71%	6.785	47,29%	5.571	57,11%	5.732	55,63%	5.646	53,41%	5.586	56,14%	5.913	58,37%	66.459	49,86%		
	Subtotal	10.050	100,00%	11.277	100,00%	11.397	100,00%	9.832	100,00%	10.530	100,00%	15.159	100,00%	14.348	100,00%	9.755	100,00%	10.303	100,00%	10.572	100,00%	9.950	100,00%	10.131	100,00%	133.304	100,00%		
	NO	2.263	55,95%	2.169	63,57%	2.514	60,06%	2.262	62,49%	2.399	53,26%	2.641	44,03%	2.593	39,91%	2.537	45,72%	2.579	53,13%	2.280	57,34%	2.189	63,34%	2.255	55,13%	28.681	52,93%		
NUE_115	SI	1.782	44,05%	1.243	36,43%	1.672	39,94%	1.358	37,51%	2.105	46,74%	3.357	55,97%	3.904	60,09%	3.012	54,28%	2.275	46,87%	1.696	42,66%	1.267	36,66%	1.835	44,87%	25.506	47,07%		
	Subtotal	4.045	100,00%	3.412	100,00%	4.186	100,00%	3.620	100,00%	4.504	100,00%	5.998	100,00%	6.497	100,00%	5.549	100,00%	4.854	100,00%	3.976	100,00%	3.456	100,00%	4.090	100,00%	54.187	100,00%		
	NO	4.876	22,86%	5.064	25,09%	4.562	22,47%	4.885	24,53%	4.936	23,39%	5.393	25,53%	5.038	22,72%	4.541	23,08%</												

## DISTRIBUZIONE CHIAMATE SULLE NUMERAZIONI DI EMERGENZA – ANNO 2016

Le tabelle riportano la distribuzione delle chiamate ai PSAP2 in base al numero di emergenza composto dal cittadino. Le analisi del traffico telefonico dimostrano che spesso la chiamata a un determinato numero dell'emergenza viene instradata per competenza a un'Amministrazione il cui numero di emergenza è diverso da quello chiamato.

### CUR NUE 112 BRESCIA

Tipo Coda	aa-mese	Ds_TP_PSAP2	2016-01		2016-02		2016-03		2016-04		2016-05		2016-06		2016-07		2016-08		2016-09		2016-10		2016-11		2016-12		Total			
			n°	%	n°	%	n°	%	n°	%	n°	%	n°	%	n°	%	n°	%	n°	%	n°	%	n°	%	n°	%	n°	%	n°	%
NUE_112		1. CARABINIERI	13.708	61,92%	13.183	60,58%	14.160	61,54%	13.570	60,66%	14.614	60,83%	16.006	60,66%	18.039	61,24%	15.871	61,06%	14.976	60,03%	14.864	59,74%	14.608	61,35%	15.042	57,78%	178.641	60,59%	178.641	60,59%
		2. POLIZIA DI STATO	2.737	12,36%	2.734	12,56%	2.837	12,33%	3.155	14,10%	3.202	13,33%	3.695	14,00%	3.895	13,22%	3.290	12,66%	3.570	14,31%	3.509	14,10%	3.160	13,27%	3.414	13,11%	39.198	13,50%	39.198	13,50%
		3. VIGILI DEL FUOCO	719	3,25%	635	2,92%	734	3,19%	701	3,13%	900	3,75%	1.132	4,29%	1.509	5,12%	1.208	4,65%	1.050	4,21%	817	3,28%	507	2,13%	799	3,07%	10.711	3,63%	10.711	3,63%
		4. EMERGENZA SANITARIA	4.973	22,46%	5.207	23,93%	5.280	22,95%	4.944	22,10%	5.308	22,09%	5.552	21,04%	6.012	20,41%	5.623	21,63%	5.350	21,45%	5.693	22,88%	5.536	23,25%	6.779	26,04%	66.257	22,47%	66.257	22,47%
		Subtotal	22.137	100,00%	21.762	100,00%	23.011	100,00%	22.370	100,00%	24.025	100,00%	26.385	100,00%	29.455	100,00%	25.992	100,00%	24.947	100,00%	24.883	100,00%	23.811	100,00%	26.634	100,00%	294.512	100,00%	294.512	100,00%
NUE_113		1. CARABINIERI	2.710	49,31%	2.589	48,00%	2.569	45,80%	2.610	46,49%	2.586	45,50%	3.147	47,59%	3.389	45,89%	2.882	46,57%	3.001	46,85%	2.923	46,62%	2.807	48,72%	3.077	50,74%	34.290	47,31%	34.290	47,31%
		2. POLIZIA DI STATO	2.238	40,72%	2.334	43,27%	2.519	44,91%	2.486	44,28%	2.543	44,74%	2.764	41,80%	3.206	43,41%	2.594	41,91%	2.772	43,27%	2.659	42,41%	2.343	40,67%	2.318	38,23%	30.776	42,46%	30.776	42,46%
		3. VIGILI DEL FUOCO	106	1,93%	90	1,67%	123	2,19%	109	1,94%	146	2,57%	174	2,63%	279	3,78%	187	3,02%	150	2,34%	126	2,01%	98	1,70%	140	2,31%	1.728	2,38%	1.728	2,38%
		4. EMERGENZA SANITARIA	442	8,04%	380	7,04%	398	7,10%	409	7,29%	409	7,20%	528	7,98%	511	6,92%	526	8,50%	483	7,54%	562	8,96%	513	8,90%	529	8,72%	5.690	7,85%	5.690	7,85%
		Subtotal	5.496	100,00%	5.394	100,00%	5.609	100,00%	5.614	100,00%	5.684	100,00%	6.613	100,00%	7.385	100,00%	6.189	100,00%	6.406	100,00%	6.270	100,00%	5.761	100,00%	6.064	100,00%	72.485	100,00%	72.485	100,00%
NUE_115		1. CARABINIERI	103	6,01%	110	7,07%	96	5,51%	94	5,69%	112	4,66%	122	4,52%	137	4,29%	142	4,79%	154	6,51%	121	6,43%	139	9,99%	120	6,58%	1.450	5,74%	1.450	5,74%
		2. POLIZIA DI STATO	32	1,87%	44	3,08%	42	2,41%	39	2,36%	33	1,37%	56	2,07%	65	2,04%	50	1,69%	54	2,28%	41	2,18%	51	3,66%	56	3,07%	563	2,23%	563	2,23%
		3. VIGILI DEL FUOCO	1.445	84,26%	1.126	78,85%	1.444	82,89%	1.374	83,17%	1.218	88,56%	2.388	88,41%	2.798	87,66%	2.601	87,81%	1.950	82,42%	1.541	81,84%	1.020	73,28%	1.388	76,14%	21.203	83,94%	21.203	83,94%
		4. EMERGENZA SANITARIA	135	7,87%	148	10,36%	160	9,18%	145	8,78%	130	5,41%	135	5,00%	192	6,02%	169	5,71%	208	8,79%	180	9,56%	182	13,07%	259	14,21%	2.043	8,09%	2.043	8,09%
		Subtotal	1.715	100,00%	1.428	100,00%	1.742	100,00%	1.652	100,00%	2.403	100,00%	3.190	100,00%	3.192	100,00%	2.962	100,00%	2.366	100,00%	1.883	100,00%	1.392	100,00%	1.823	100,00%	25.259	100,00%	25.259	100,00%
NUE_118		1. CARABINIERI	358	2,41%	301	2,08%	360	2,36%	396	2,77%	387	2,60%	370	2,37%	486	2,97%	442	2,89%	409	2,70%	438	2,72%	449	2,96%	415	2,22%	4.791	2,59%	4.791	2,59%
		2. POLIZIA DI STATO	113	0,76%	120	0,83%	120	0,79%	131	0,92%	164	1,10%	159	1,08%	204	1,25%	195	1,28%	168	1,11%	154	0,96%	139	0,92%	164	0,88%	1.831	0,99%	1.831	0,99%
		3. VIGILI DEL FUOCO	116	0,78%	91	0,63%	106	0,69%	105	0,73%	120	0,81%	154	1,04%	220	1,34%	208	1,36%	140	0,92%	107	0,66%	95	0,63%	132	0,71%	1.594	0,86%	1.594	0,86%
		4. EMERGENZA SANITARIA	14.295	96,06%	13.945	96,46%	14.679	96,16%	13.654	95,58%	14.201	95,49%	14.124	95,52%	15.457	94,44%	14.429	94,47%	14.451	95,27%	15.404	95,66%	14.461	95,49%	17.968	96,19%	177.068	95,57%	177.068	95,57%
		Subtotal	14.882	100,00%	14.457	100,00%	15.265	100,00%	14.286	100,00%	14.872	100,00%	14.787	100,00%	16.367	100,00%	15.274	100,00%	15.168	100,00%	16.103	100,00%	15.144	100,00%	18.679	100,00%	185.284	100,00%	185.284	100,00%

### CUR NUE 112 MILANO

Tipo Coda	aa-mese	Ds_TP_PSAP2	2016-01		2016-02		2016-03		2016-04		2016-05		2016-06		2016-07		2016-08		2016-09		2016-10		2016-11		2016-12		Total			
			n°	%	n°	%	n°	%	n°	%	n°	%	n°	%	n°	%	n°	%	n°	%	n°	%	n°	%	n°	%	n°	%	n°	%
NUE_112		1. CARABINIERI	10.828	48,28%	9.882	46,87%	8.892	46,52%	10.639	46,24%	12.167	45,75%	13.107	47,13%	14.844	48,14%	12.101	49,17%	12.367	46,39%	11.750	43,79%	12.117	44,76%	12.383	43,95%	141.077	46,37%	141.077	46,37%
		2. POLIZIA DI STATO	5.737	25,58%	5.507	26,12%	5.205	27,23%	6.386	27,76%	7.028	26,43%	7.652	27,51%	8.445	27,39%	6.767	27,50%	7.257	27,22%	7.297	27,19%	7.513	27,75%	7.145	25,36%	81.939	26,93%	81.939	26,93%
		3. VIGILI DEL FUOCO	733	3,27%	517	2,45%	445	2,33%	626	2,72%	984	3,70%	957	3,44%	1.411	4,58%	935	3,80%	907	3,40%	720	2,68%	615	2,27%	648	2,30%	9.498	3,12%	9.498	3,12%
		4. EMERGENZA SANITARIA	4.444	19,81%	4.471	21,21%	3.946	20,64%	4.580	19,91%	5.485	20,62%	5.304	19,07%	5.347	17,34%	4.365	17,74%	5.276	19,79%	6.042	22,52%	5.794	21,40%	7.075	25,11%	62.129	20,42%	62.129	20,42%
		Subtotal	22.429	100,00%	21.082	100,00%	19.114	100,00%	23.006	100,00%	26.596	100,00%	27.813	100,00%	30.834	100,00%	24.609	100,00%	26.657	100,00%	26.835	100,00%	27.071	100,00%	28.177	100,00%	304.223	100,00%	304.223	100,00%
NUE_113		1. CARABINIERI	4.054	34,03%	3.752	33,66%	3.394	31,66%	4.341	34,50%	4.472	32,44%	4.936	34,46%	5.186	32,76%	4.257	34,39%	4.614	34,52%	4.712	33,83%	4.480	33,42%	4.717	33,81%	52.915	33,63%	52.915	33,63%
		2. POLIZIA DI STATO	6.236	52,33%	5.989	53,73%	6.042	56,36%	6.765	53,76%	7.472	54,21%	7.510	52,43%	8.720	55,09%	6.820	55,10%	6.949	51,99%	7.398	53,11%	7.122	53,13%	7.278	52,16%	84.301	53,59%	84.301	53,59%
		3. VIGILI DEL FUOCO	215	1,80%	127	1,14%	157	1,46%	165	1,31%	256	1,86%	255	1,78%	378	2,39%	204	1,65%	279	2,09%	205	1,47%	163	1,22%	226	1,62%	2.630	1,67%	2.630	1,67%
		4. EMERGENZA SANITARIA	945	7,93%	810	7,27%	731	6,82%	900	7,15%	992	7,20%	1.104	7,71%	1.081	6,83%	840	6,79%	1.052	7,87%	1.023	7,34%	987	7,36%	1.140	8,17%	11.695	7,35%	11.695	7,35%
		Subtotal	11.913	100,00%	11.146	100,00%	10.720	100,00%	12.584	100,00%	13.784	100,00%	14.323	100,00%	15.830	100,00%	12.577	100,00%	13.366	100,00%	13.919	100,00%	13.404	100,00%	13.952	100,00%	157.328	100,00%	157.328	100,00%
NUE_115		1. CARABINIERI	112	4,04%	87	4,78%	88	5,15%	89	3,98%	140	4,09%	121	3,35%	194	4,30%	176	5,52%	132	3,87%	144	4,88%	146	6,22%	127	4,97%	1.556	4,51%	1.556	4,51%
		2. POLIZIA DI STATO	89	3,21%	89	4,89%	69	4,04%	98	4,39%	81	2,36%	116	3,21%	142	3,15%	119	3,73%	120	3,51%	121	4,10%	111	4,73%	93	3,64%	1.248	3,61%	1.248	3,61%
		3. VIGILI DEL FUOCO	2.199	79,41%	1.330	73,04%	1.314	76,93%	1.709	76,50%	2.836	82,78%	2.981	82,51%	3.688	81,81%	2.575	80,77%	2.781	81,43%	2.292	77,62%	1.741	74,12%	1.933	75,66%	27.379	79,27%	27.379	79,27%
		4. EMERGENZA SANITARIA	346	12,50%	302	16,58%	223	13,06%	327	14,64%	343	10,01%	378	10,46%	462	10,25%	304	9,54%	368	10,78%	358	12,12%	325	13,84%	368	14,40%	4.104	11,8		



## CUR NUE 112 VARESE

Tipo Coda	aa-mese	2016-01		2016-02		2016-03		2016-04		2016-05		2016-06		2016-07		2016-08		2016-09		2016-10		2016-11		2016-12		Total		
		n°	%	n°	%	n°	%	n°	%	n°	%	n°	%	n°	%	n°	%	n°	%	n°	%	n°	%	n°	%	n°	%	
NUE_112	DS_TP_P SAP2	18.725	59,27%	17.292	58,58%	18.942	59,15%	19.331	60,88%	20.348	58,77%	21.834	59,58%	25.724	60,23%	22.534	61,23%	20.950	59,86%	21.183	60,07%	20.279	59,41%	20.823	56,26%	247.965	59,45%	
	1. CARABINIERI	3.271	10,35%	3.244	10,99%	3.346	10,45%	3.479	10,96%	3.649	10,54%	3.987	10,88%	4.563	10,68%	3.883	10,55%	4.137	11,82%	3.967	11,25%	3.854	11,29%	3.899	10,53%	45.179	10,86%	
	2. POLIZIA DI STATO	1.060	3,36%	827	2,80%	1.278	3,99%	837	2,64%	1.553	4,49%	2.243	6,12%	3.143	7,36%	2.219	6,03%	1.437	4,11%	990	2,81%	918	2,69%	1.310	3,54%	17.815	4,27%	
	3. VIGILI DEL FUOCO																											
	4. EMERGENZA SANITARIA	8.537	27,02%	8.155	27,63%	8.458	26,41%	8.105	25,53%	9.073	26,21%	8.580	23,41%	9.282	21,73%	8.167	22,19%	8.476	24,22%	9.123	25,87%	9.085	26,61%	10.983	29,67%	106.024	25,42%	
	Subtotal	31.593	100,00%	29.518	100,00%	32.024	100,00%	31.752	100,00%	34.623	100,00%	36.644	100,00%	42.712	100,00%	36.803	100,00%	35.000	100,00%	35.263	100,00%	34.136	100,00%	37.015	100,00%	417.083	100,00%	
NUE_113	1. CARABINIERI	2.594	51,65%	2.403	49,78%	2.672	51,58%	2.543	50,06%	2.589	49,32%	2.938	50,07%	3.213	47,35%	2.892	51,91%	2.937	51,24%	2.847	50,43%	2.861	51,22%	3.126	52,87%	33.615	50,58%	
	2. POLIZIA DI STATO	1.767	35,19%	1.823	37,77%	1.866	36,02%	1.977	38,92%	1.983	37,78%	2.190	37,32%	2.636	38,85%	2.037	36,56%	2.081	36,30%	2.081	36,86%	2.042	36,56%	2.013	34,04%	24.496	36,86%	
	3. VIGILI DEL FUOCO	165	3,29%	115	2,38%	137	2,64%	88	1,73%	173	3,30%	255	4,35%	360	5,31%	196	3,52%	169	2,95%	151	2,67%	101	1,81%	180	3,04%	2.090	3,14%	
	4. EMERGENZA SANITARIA	496	9,88%	486	10,07%	505	9,75%	472	9,29%	504	9,60%	485	8,27%	576	8,49%	446	8,01%	545	9,51%	567	10,04%	582	10,42%	594	10,05%	6.258	9,42%	
	Subtotal	5.022	100,00%	4.827	100,00%	5.180	100,00%	5.080	100,00%	5.249	100,00%	5.868	100,00%	6.785	100,00%	5.571	100,00%	5.732	100,00%	5.646	100,00%	5.586	100,00%	5.913	100,00%	66.459	100,00%	
NUE_115	1. CARABINIERI	121	6,79%	133	10,70%	131	7,83%	126	9,28%	119	5,65%	166	4,94%	224	5,74%	189	6,27%	175	7,69%	156	9,20%	148	11,68%	184	10,03%	1.872	7,34%	
	2. POLIZIA DI STATO	48	2,69%	50	4,02%	61	3,65%	34	2,50%	49	2,33%	62	1,85%	74	1,90%	63	2,09%	38	1,67%	52	3,07%	54	4,26%	54	2,94%	639	2,51%	
	3. VIGILI DEL FUOCO	1.459	81,87%	934	75,14%	1.340	80,14%	1.037	76,36%	1.776	84,37%	2.951	87,91%	3.426	87,76%	2.590	85,99%	1.905	83,74%	1.325	78,13%	874	68,98%	1.394	75,97%	21.011	82,38%	
	4. EMERGENZA SANITARIA	154	8,64%	126	10,14%	140	8,37%	161	11,86%	161	7,65%	178	5,30%	180	4,61%	170	5,64%	157	6,90%	163	9,61%	191	15,07%	203	11,06%	1.984	7,78%	
	Subtotal	1.782	100,00%	1.243	100,00%	1.672	100,00%	1.358	100,00%	2.105	100,00%	3.357	100,00%	3.904	100,00%	3.012	100,00%	2.275	100,00%	1.696	100,00%	1.267	100,00%	1.835	100,00%	25.506	100,00%	
NUE_118	1. CARABINIERI	756	4,59%	612	4,05%	688	4,37%	761	5,06%	790	4,89%	773	4,91%	910	5,31%	783	5,18%	810	5,28%	799	4,84%	832	5,26%	816	4,26%	9.330	4,83%	
	2. POLIZIA DI STATO	216	1,31%	211	1,40%	251	1,59%	243	1,62%	295	1,82%	311	1,98%	334	1,95%	272	1,80%	251	1,64%	292	1,77%	260	1,64%	264	1,38%	3.200	1,65%	
	3. VIGILI DEL FUOCO	259	1,57%	156	1,03%	215	1,37%	163	1,08%	233	1,44%	503	3,20%	415	2,42%	345	2,28%	226	1,47%	174	1,05%	138	0,87%	213	1,11%	3.840	1,57%	
	4. EMERGENZA SANITARIA	15.224	92,52%	14.143	93,53%	14.588	92,67%	13.861	92,23%	14.853	91,85%	14.146	89,91%	15.481	90,32%	13.730	90,75%	14.063	91,62%	15.246	92,34%	14.589	92,22%	17.860	93,25%	177.784	91,95%	
	Subtotal	16.455	100,00%	15.122	100,00%	15.742	100,00%	15.028	100,00%	16.171	100,00%	15.733	100,00%	17.140	100,00%	15.130	100,00%	15.350	100,00%	16.511	100,00%	15.819	100,00%	19.153	100,00%	193.354	100,00%	

## NUMERAZIONE DA CUI PROVIENE LA CHIAMATA PASSATA AI PSAP2- ANNO 2016

### CUR NUE 112 BRESCIA

aa-mese	Tipo Coda	2016-01		2016-02		2016-03		2016-04		2016-05		2016-06		2016-07		2016-08		2016-09		2016-10		2016-11		2016-12		Total			
		n°	%	n°	%	n°	%	n°	%	n°	%	n°	%	n°	%	n°	%	n°	%	n°	%	n°	%	n°	%	n°	%		
DS_TP_PSAP2		10828	70.03%	9882	69.61%	8892	69.31%	10639	68.05%	12167	70.20%	13107	69.59%	14844	70.98%	12101	70.75%	12367	69.86%	11750	68.16%	12117	69.84%	12383	69.18%	141077	69.67%		
1. CARABINIERI	NUE_112	4054	26.22%	3752	26.43%	3394	26.45%	4341	27.76%	4472	25.80%	4936	26.21%	5186	24.80%	4257	24.89%	4614	26.06%	4712	27.33%	4480	25.82%	4717	26.35%	52195	26.13%		
	NUE_115	112	0.72%	87	0.61%	88	0.69%	89	0.57%	140	0.81%	121	0.64%	194	0.93%	176	1.03%	132	0.75%	144	0.84%	146	0.84%	127	0.71%	1556	0.77%		
	NUE_118	469	3.03%	475	3.35%	456	3.55%	566	3.62%	554	3.20%	670	3.56%	688	3.29%	569	3.33%	589	3.33%	634	3.68%	606	3.49%	672	3.75%	6948	3.43%		
	Subtotal	15463	100.00%	14196	100.00%	12830	100.00%	15635	100.00%	17333	100.00%	18834	100.00%	20912	100.00%	17103	100.00%	17702	100.00%	17240	100.00%	17349	100.00%	17899	100.00%	202496	100.00%		
	NUE_111	5737	49.93%	5507	45.86%	5205	44.42%	6386	46.37%	7028	46.25%	7652	48.34%	8445	46.99%	6767	47.54%	7257	48.72%	7297	47.22%	7513	48.55%	7145	47.39%	81939	47.08%		
2. POLIZIA DI STATO	NUE_112	6236	49.92%	5989	49.88%	6042	51.56%	6765	49.12%	7472	49.17%	7510	47.44%	8720	48.52%	6820	47.91%	6949	46.66%	7398	47.88%	7122	46.30%	7278	48.27%	84301	48.44%		
	NUE_115	89	0.71%	89	0.74%	69	0.59%	98	0.71%	81	0.53%	116	0.73%	142	0.79%	119	0.84%	120	0.81%	121	0.78%	111	0.72%	93	0.62%	1248	0.72%		
	NUE_118	429	3.43%	422	3.51%	403	3.44%	524	3.80%	616	4.05%	553	3.49%	665	3.70%	529	3.72%	568	3.81%	636	4.12%	635	4.13%	562	3.73%	6542	3.76%		
	Subtotal	12491	100.00%	12007	100.00%	11719	100.00%	13773	100.00%	15197	100.00%	15831	100.00%	17972	100.00%	14235	100.00%	14894	100.00%	15452	100.00%	15381	100.00%	15078	100.00%	174030	100.00%		
	NUE_111	733	21.55%	517	24.47%	445	21.57%	626	23.51%	984	22.48%	957	21.43%	1411	23.83%	935	23.43%	907	21.42%	720	20.76%	615	22.92%	648	21.41%	9498	22.40%		
3. VIGILI DEL FUOCO	NUE_111	215	6.32%	127	6.01%	157	7.61%	165	6.20%	256	5.85%	255	5.71%	378	6.38%	204	5.11%	279	6.59%	205	5.91%	163	6.08%	226	7.47%	2630	6.20%		
	NUE_115	2199	64.66%	1330	62.94%	1314	63.69%	1709	64.18%	2836	64.78%	2981	66.75%	3688	62.28%	2575	64.52%	2781	65.68%	2292	66.09%	1741	64.89%	1933	63.86%	27379	64.56%		
	NUE_118	254	7.47%	139	6.58%	147	7.13%	163	6.12%	302	6.90%	273	6.11%	445	7.51%	277	6.94%	267	6.31%	251	7.24%	164	6.11%	220	7.27%	2902	6.84%		
	Subtotal	3401	100.00%	2113	100.00%	2063	100.00%	2663	100.00%	4378	100.00%	4466	100.00%	5922	100.00%	3991	100.00%	4234	100.00%	3468	100.00%	2683	100.00%	3027	100.00%	42409	100.00%		
	NUE_112	4444	14.04%	4471	15.13%	3946	15.74%	4580	15.65%	5485	16.02%	5304	16.49%	5347	16.69%	4365	16.91%	5276	16.88%	6042	17.38%	5794	17.51%	7075	17.55%	62129	16.38%		
4. EMERGENZA SANITARIA	NUE_111	945	2.98%	810	2.74%	731	2.92%	900	3.08%	992	2.90%	1104	3.43%	1081	3.37%	840	3.26%	1052	3.37%	1023	2.94%	987	2.98%	1140	2.83%	11605	3.06%		
	NUE_115	346	1.09%	302	1.02%	223	0.89%	327	1.12%	343	1.00%	378	1.18%	462	1.44%	304	1.18%	368	1.18%	358	1.03%	325	0.98%	368	0.91%	4104	1.08%		
	NUE_118	25924	81.89%	23965	81.11%	20164	80.45%	23461	80.16%	27412	80.08%	25377	78.90%	25156	78.50%	20297	78.65%	24560	78.58%	27340	78.65%	25981	78.72%	31736	78.71%	301375	79.74%		
	Subtotal	31659	100.00%	29548	100.00%	25064	100.00%	29268	100.00%	34232	100.00%	32163	100.00%	32046	100.00%	25806	100.00%	31256	100.00%	31256	100.00%	33087	100.00%	40319	100.00%	379211	100.00%		
	NUE_112	687	55.90%	705	55.38%	626	55.94%	775	60.74%	932	55.91%	793	55.81%	787	57.95%	441	58.33%	850	60.28%	1026	57.84%	1032	57.24%	926	55.58%	9280	57.19%		
5. POLIZIA LOCALE	NUE_111	463	37.67%	468	36.76%	396	35.39%	413	32.37%	592	35.51%	518	36.45%	465	34.24%	256	33.86%	472	33.48%	591	33.31%	652	36.16%	591	35.47%	5877	35.08%		
	NUE_115	23	1.87%	13	1.02%	14	1.25%	11	0.86%	26	1.56%	17	1.20%	12	1.62%	14	1.85%	14	0.99%	38	2.14%	26	1.44%	34	2.04%	252	1.50%		
	NUE_118	56	4.56%	87	6.83%	83	7.42%	77	6.03%	117	7.02%	93	6.54%	84	6.19%	45	5.95%	74	5.25%	119	6.71%	93	5.16%	115	6.90%	1043	6.23%		
	Subtotal	1229	100.00%	1273	100.00%	1119	100.00%	1276	100.00%	1667	100.00%	1421	100.00%	1358	100.00%	756	100.00%	1410	100.00%	1774	100.00%	1803	100.00%	1666	100.00%	16752	100.00%		

### CUR NUE 112 MILANO

aa-mese	Tipo Coda	2016-01		2016-02		2016-03		2016-04		2016-05		2016-06		2016-07		2016-08		2016-09		2016-10		2016-11		2016-12		Total			
		n°	%	n°	%	n°	%	n°	%	n°	%	n°	%	n°	%	n°	%	n°	%	n°	%	n°	%	n°	%	n°	%		
DS_TP_PSAP2		10828	70.03%	9882	69.61%	8892	69.31%	10639	68.05%	12167	70.20%	13107	69.59%	14844	70.98%	12101	70.75%	12367	69.86%	11750	68.16%	12117	69.84%	12383	69.18%	141077	69.67%		
1. CARABINIERI	NUE_112	4054	26.22%	3752	26.43%	3394	26.45%	4341	27.76%	4472	25.80%	4936	26.21%	5186	24.80%	4257	24.89%	4614	26.06%	4712	27.33%	4480	25.82%	4717	26.35%	52195	26.13%		
	NUE_115	112	0.72%	87	0.61%	88	0.69%	89	0.57%	140	0.81%	121	0.64%	194	0.93%	176	1.03%	132	0.75%	144	0.84%	146	0.84%	127	0.71%	1556	0.77%		
	NUE_118	469	3.03%	475	3.35%	456	3.55%	566	3.62%	554	3.20%	670	3.56%	688	3.29%	569	3.33%	589	3.33%	634	3.68%	606	3.49%	672	3.75%	6948	3.43%		
	Subtotal	15463	100.00%	14196	100.00%	12830	100.00%	15635	100.00%	17333	100.00%	18834	100.00%	20912	100.00%	17103	100.00%	17702	100.00%	17240	100.00%	17349	100.00%	17899	100.00%	202496	100.00%		
	NUE_111	5737	49.93%	5507	45.86%	5205	44.42%	6386	46.37%	7028	46.25%	7652	48.34%	8445	46.99%	6767	47.54%	7257	48.72%	7297	47.22%	7513	48.55%	7145	47.39%	81939	47.08%		
2. POLIZIA DI STATO	NUE_112	6236	49.92%	5989	49.88%	6042	51.56%	6765	49.12%	7472	49.17%	7510	47.44%	8720	48.52%	6820	47.91%	6949	46.66%	7398	47.88%	7122	46.30%	7278	48.27%	84301	48.44%		
	NUE_115	89	0.71%	89	0.74%	69	0.59%	98	0.71%	81	0.53%	116	0.73%	142	0.79%	119	0.84%	120	0.81%	121	0.78%	111	0.72%	93	0.62%	1248	0.72%		
	NUE_118	429	3.43%	422	3.51%	403	3.44%	524	3.80%	616	4.05%	553	3.49%	665	3.70%	529	3.72%	568	3.81%	636	4.12%	635	4.13%	562	3.73%	6542	3.76%		
	Subtotal	12491	100.00%	12007	100.00%	11719	100.00%	13773	100.00%	15197	100.00%	15831	100.00%	17972	100.00%	14235	100.00%	14894	100.00%	15452	100.00%	15381	100.00%	15078	100.00%	174030	100.00%		
	NUE_111	733	21.55%	517	24.47%	445	21.57%	626	23.51%	984	22.48%	957	21.43%	1411	23.83%	935	23.43%	907	21.42%	720	20.76%	615	22.92%	648	21.41%	9498	22.40%		
3. VIGILI DEL FUOCO	NUE_111	215	6.32%	127	6.01%	157	7.61%	165	6.20%	256	5.85%	255	5.71%	378	6.38%	204	5.11%	279	6.59%	205	5.91%	163	6.08%	226	7.47%	2630	6.20%		
	NUE_115	2199	64.66%	1330	62.94%	1314	63.69%																						



## TEMPI MEDI DI RISPOSTA PSAP1 – ANNO 2016

2016 - 1° SEMESTRE Attesa_avg	
CUR	4,11
CUR_BS	3,00
CUR_MI	4,34
CUR_VA	5,00

2°SEMESTRE 2016 Attesa_avg	
CUR	4,70
CUR_BS	3,21
CUR_MI	5,30
CUR_VA	5,58

2016 Attesa_avg	
CUR	4,41
CUR_BS	3,11
CUR_MI	4,82
CUR_VA	5,30